

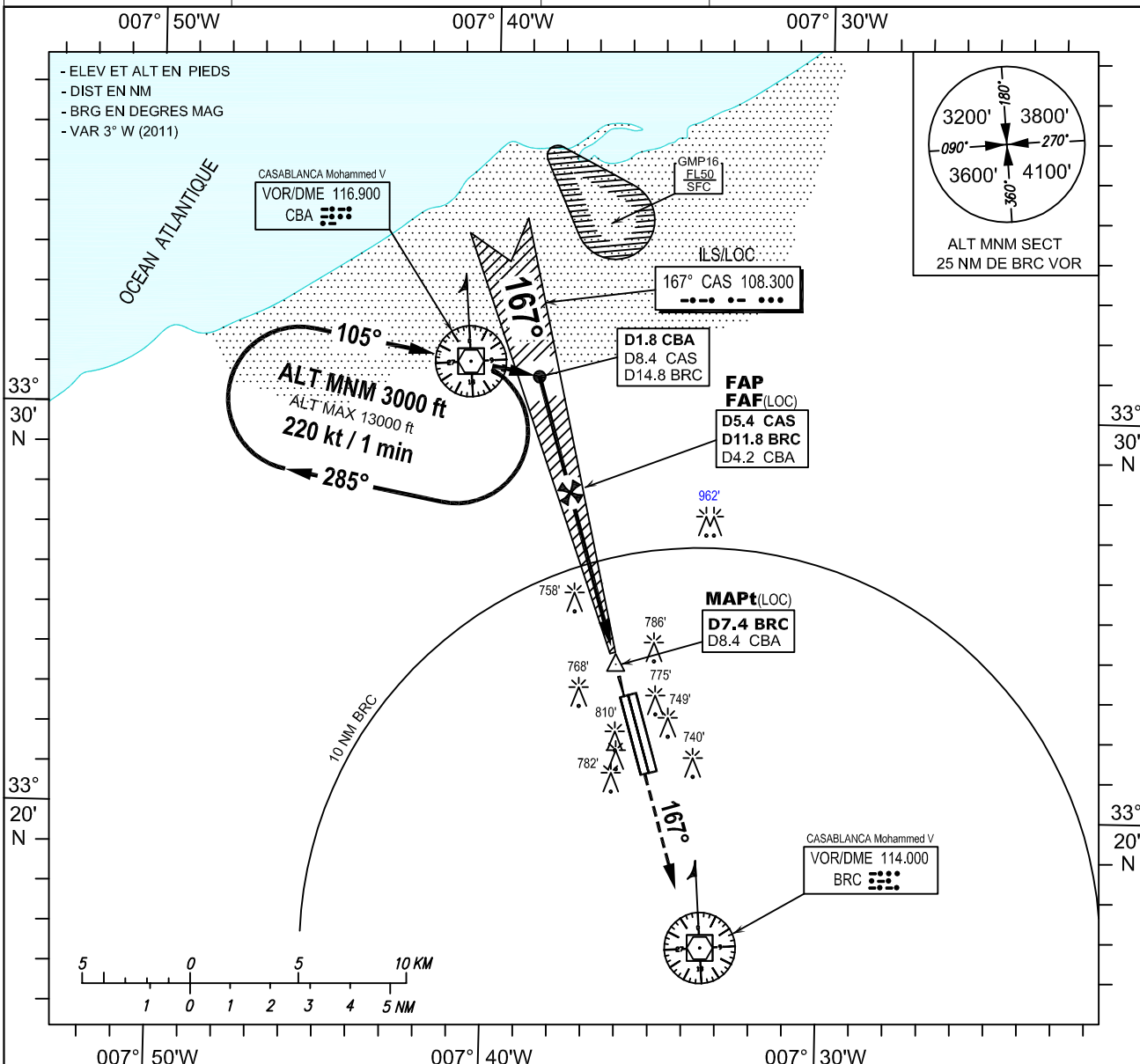
**CARTE D'APPROCHE  
AUX INSTRUMENTS  
O.A.C.I.**

ALT D'AERODROME : 656 ft (200m)

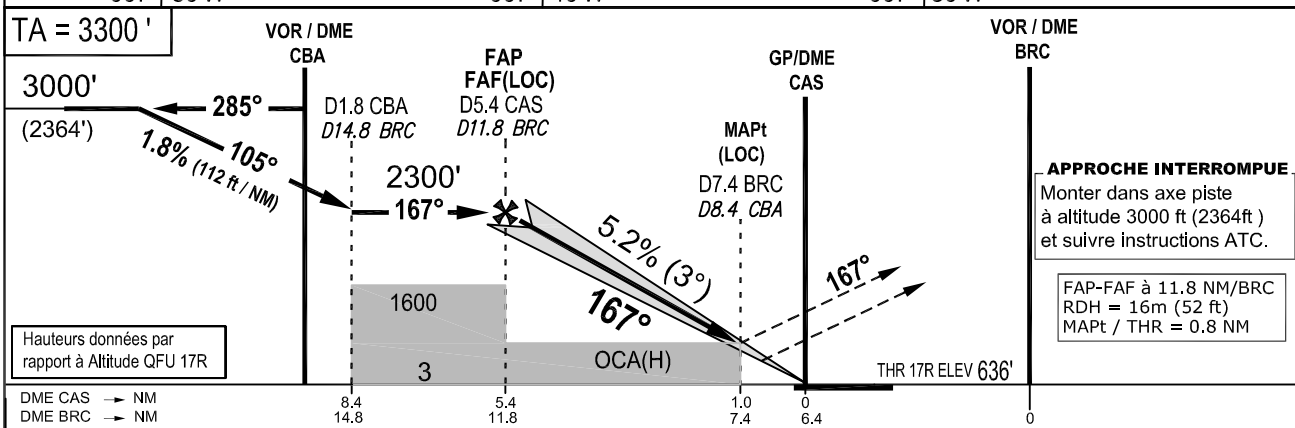
TWR : 118.500  
: 119.900  
APP : 121.300

**CASABLANCA (GMMN)  
Mohammed V**

**ILS ou LOC RWY 17R**



Modification : Nouvelle carte



DME CAS → NM		8.4	5.4	1.0	0									
DME BRC → NM		14.8	11.8	7.4	6.4									
OCA(H)		A	B	C	D	G.S.	KT	70	85	100	115	130	160	185
Approche en ligne droite	ILS Cat I	840' (204')	850' (214')	860' (224')	870' (234')	FAP / THR = 5.2 NM	min : s	4:28	3:41	3:08	2:43	2:24	1:57	1:41
	LOC (GP INOP)	960' (324')				FAF / MAPt = 4.4 NM	min : s	3:45	3:06	2:38	2:17	2:01	1:39	1:25
Approche Indirecte		1150' (514')	1280' (644')	1540' (904')	Vitesse verticale de descente		ft / min	371	451	531	610	690	849	982
		DME CAS		FAP	4	3	2	1						
		Altitudes (Hauteurs) 3° APCH		2300 ft (1664 ft)	1910 ft (1274 ft)	1600 ft (964 ft)	1280 ft (644 ft)	960 ft (324 ft)						
		DME BRC		FAF	10	9	8	MAPt						
		Altitudes (Hauteurs) 3° APCH		2300 ft (1664 ft)	1790 ft (1154 ft)	1470 ft (834 ft)	1150 ft (514 ft)	960 ft (324 ft)						

**CASABLANCA Mohammed V (GMMN)****ILS ou LOC RWY 17R**

TABLEAU DE DONNEES AERONAUTIQUES  
Approche directe ILS ou LOC vers RWY 17R depuis VOR/DME CBA

Repère / Point	Coordonnées	
THR Rwy 17R (BRG 166.65°)	33°22'58.94" N	007°35'50,71" W
VOR/DME BRC (Var = 2,66°W - 01 JAN 2011)	33°16'43,09" N	007°33'26,39" W
VOR/DME CBA	33°31'17,39" N	007°40'37.87" W
ILS/LOC (CAS 108.300 Mhz)	33°20'54,36" N	007°35'08,10" W
GP/DME (CAS 334.100 Khz)	33°22'48,35" N	007°35'53,12" W
FAP/FAF(LOC) BRG 166.65°MGN/5.38 DME CAS/11.79 DME BRC	33°28'00.63" N	007°37'34.02" W
MAPt (LOC) BRG 166.65° MGN / 7.40 DME BRC	33°23'46.99" N	007°36'07.15" W