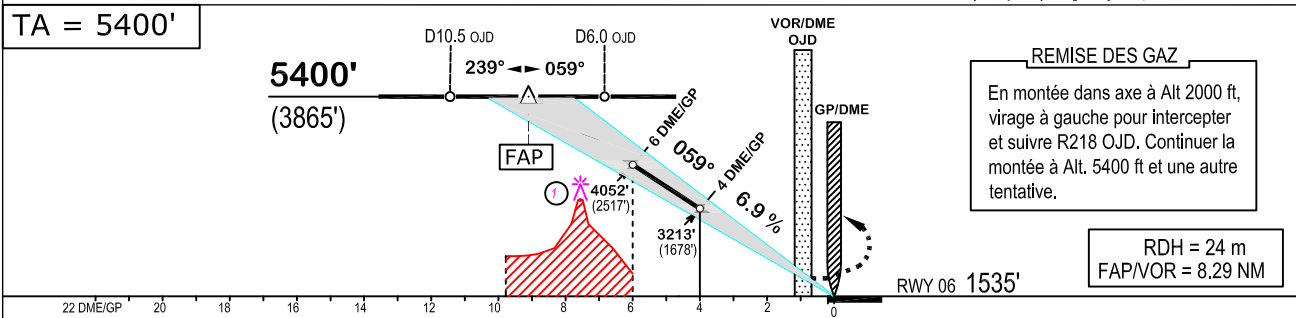
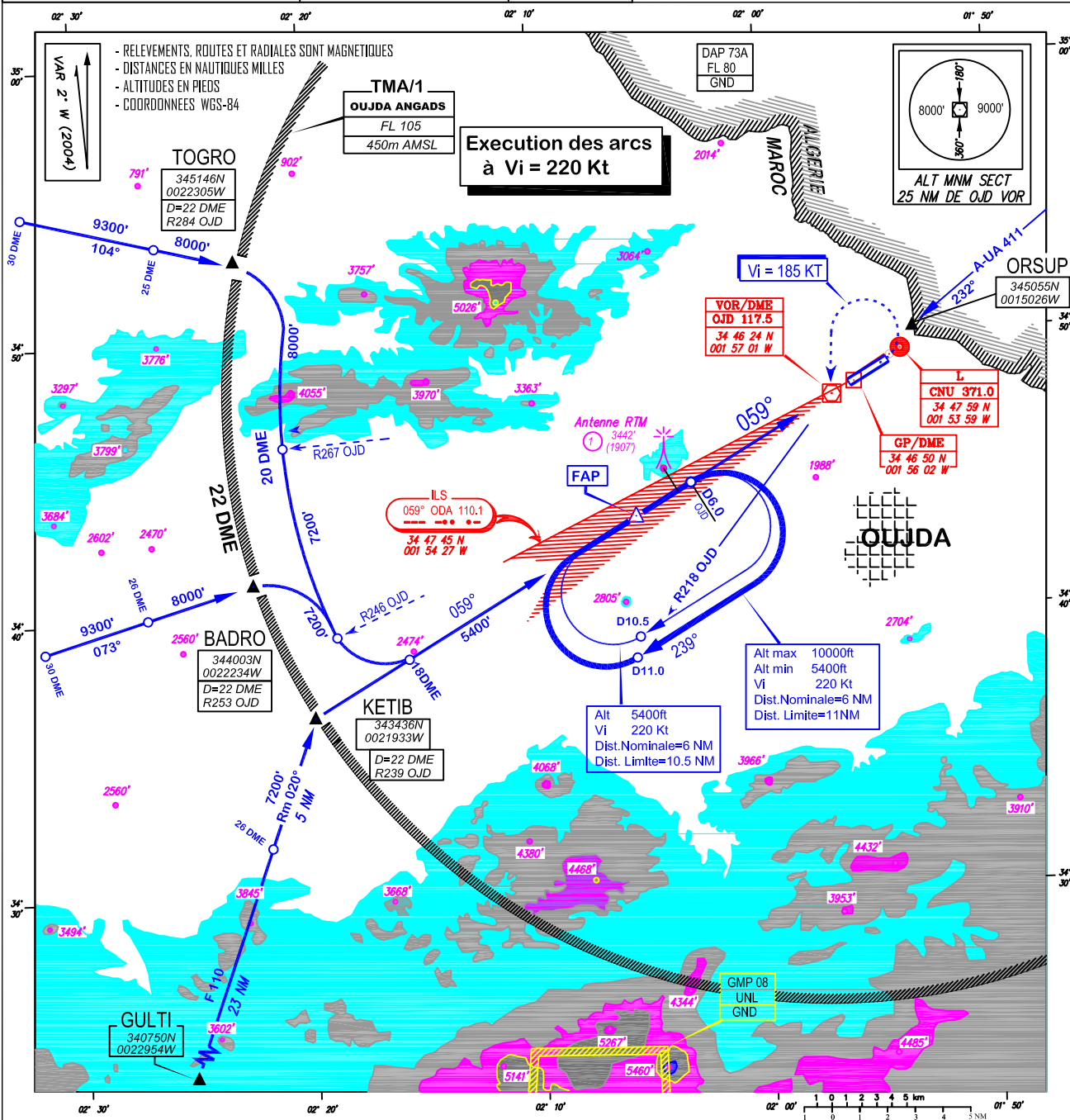


<b>CARTE D'APPROCHE AUX INSTRUMENTS O.A.C.I.</b>	Alt Aérodrome : 1535 ft Alt QFU 06 : 1535 ft	TWR : 118.2 APP : 136.6	<b>OUJDA - Angads</b> ATTENTE VOR/DME/OJD PERCEE ILS
		GMFO	<b>RWY 06</b>



OCA(OCH) en pieds	A	B	C	D		Vs(KT)	90	110	130	150	170	180	190	210
APPROCHE DE PRECISION CAT I	1840' (305')	1850' (315')	1860' (325')	1870' (335')	FAP/VOR = 8.29 NM	min : s	5:31	4:31	3:49	3:19	2:55	2:45	2:37	2:22
					Vit.Vert. desc.(Vz = 6.9 %)	ft/min	628	768	908	1048	1187	1257	1327	1467