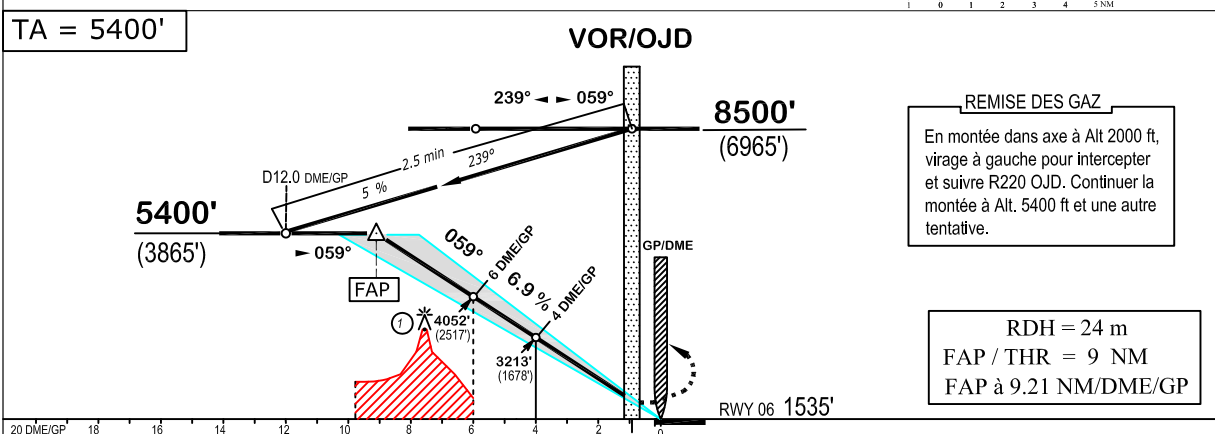
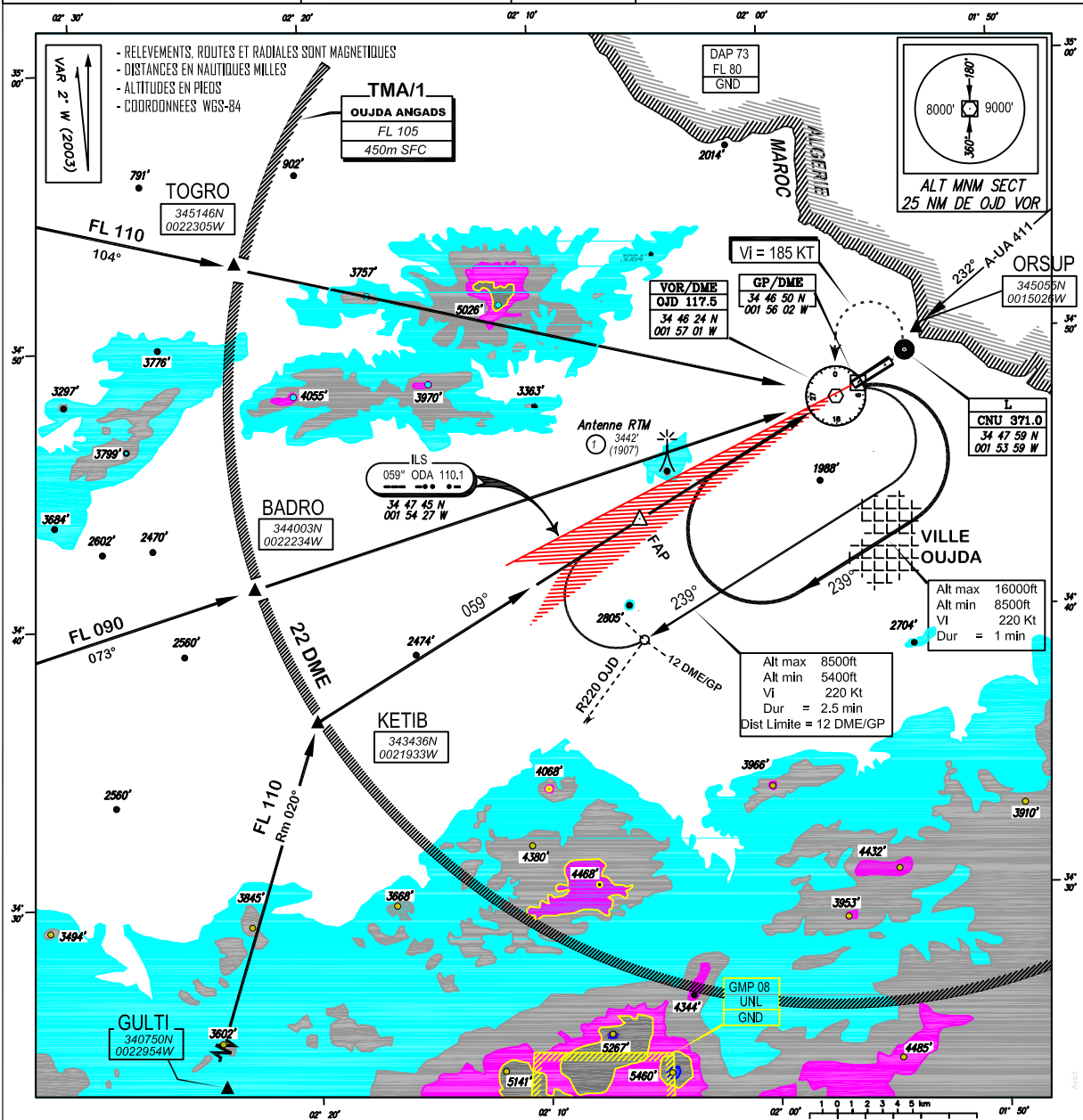


<b>CARTE D'APPROCHE AUX INSTRUMENTS O.A.C.I.</b>	Alt Aérodrome : 1535 ft Alt QFU 06 : 1535 ft	TWR : 118.2 APP : 136.6	<b>OUJDA - Angads</b>
		GMFO	ATTENTE VOR / OJD RERCEE ILS / DME / ODA <b>RWY 06</b>



OCA(OCH) en pieds	A	B	C	D		Vs(KT)	90	110	130	150	170	180	190	210
APPROCHE DIRECTE	1840'	1850'	1860'	1870'	FAP / THR = 9 NM	min : s	6:00	4:55	4:10	3:36	3:11	3:00	2:51	2:34
	(305')	(315')	(325')	(335')		ft/min	628	768	908	1048	1187	1257	1327	1467